



Proven Solutions for Cost Containment

# PMSI Product Knowledge



Mobility Equipment

**Pharmacy**

**Medical Services  
and Equipment**

**Settlement Solutions**

# Mobility Equipment

---

## Product Knowledge

- Canes
- Crutches
- Walkers
- Wheelchairs
- Cushions
- Accessories
- Scooters
- Lifts
- Transfer Boards

# Product Knowledge

## *Adjustable Straight Cane – E0100*

- Weight limit: 250lbs
- Adjustable height
- Tall, heavy duty, heavy-duty tall and pediatric

*Also known as (aka) Single Point Cane, Walking Cane*



# Product Knowledge

## *Adjustable Quad Cane – E0105*

- Weight limit: 250lbs
- Adjustable height
- Tall, heavy duty, heavy-duty tall and pediatric

*aka Four Point Cane, Four Prong Cane*



# Product Knowledge

## *Adjustable Underarm Crutches – E0113, E0114, E0116, E0117*

- Weight limit: 275lbs
- Adjustable Height
- Tall, heavy duty, heavy-duty tall and pediatric



# Product Knowledge

## *Adjustable Forearm Crutches – E0110*

- Weight limit: 250lbs
- Adjustable height
- Custom heavy-duty forearm crutches available and non-returnable
- Can be purchased individually or as a pair for the same price

*aka Lofstrand, Canadian Crutches*



# Product Knowledge

## *Adjustable Rigid Walker – E0130*

- Weight limit: 300lbs
- Adjustable height
- Tall, heavy duty, and pediatric available

*aka Pick-up Walker*



# Product Knowledge

## *Adjustable Folding Walker – E0135*

- Weight limit: 250 – 300lbs
- Adjustable height
- Tall, heavy duty, extra wide and pediatric available

*aka Pick-up Walker*



# Product Knowledge

## *Adjustable Front Wheeled Walker – E0143*

- Weight limit: 250 – 300lbs
- Adjustable height
- Tall, heavy duty, extra wide and pediatric available

*aka Rolling Walker, Wheeled Walker*



# Product Knowledge

## *Adjustable Four-Wheeled Walker – E0146*

- Weight limit: 250 – 300lbs
- Adjustable height
- Many options available, including seat, basket, handle brakes, tray, pouch and color choice

*aka Rollator® or rollabout*



# Product Knowledge

## *Accessories for Walkers*

- Weight limit: 250 – 300lbs
- Adjustable height
- Any accessories requested will require the make and model of existing walker and can be purchased through the manufacturer of the walker



# Product Knowledge

## *Platform Attachment for Walker or Crutches – E0153, E0154*

- Weight limit: 250lbs
- Always ask on which side the platform attachment needs to be installed.
- E0153 – for forearm crutch
- E 0154 – for walker



# Product Knowledge

---

## *Wheelchairs — Evaluating for Safety and Comfort*

- It is essential that the wheelchair user has substantial input during the selection process.
- When placing the order, ensuring proper fit is imperative, not only for health and safety reasons, but also mental health impact.
- Once the new wheelchair arrives, the prescribing doctor should evaluate the wheelchair to ensure proper fit. A number of fine-tune adjustments can be made to achieve the maximum mechanical benefit. The wheelchair should continually be re-evaluated to ensure it is safely meeting the needs of its user. This should be done by both the wheelchair user and doctor.
- Manual wheelchairs require a good deal of upper body strength, therefore the position of the arms in relation to the manual wheelchair's drive wheels is very important. When in the starting position, the user's arms should be at rest. This will help to prevent cramps and reduce the effort required to use the wheelchair.

# Product Knowledge

---

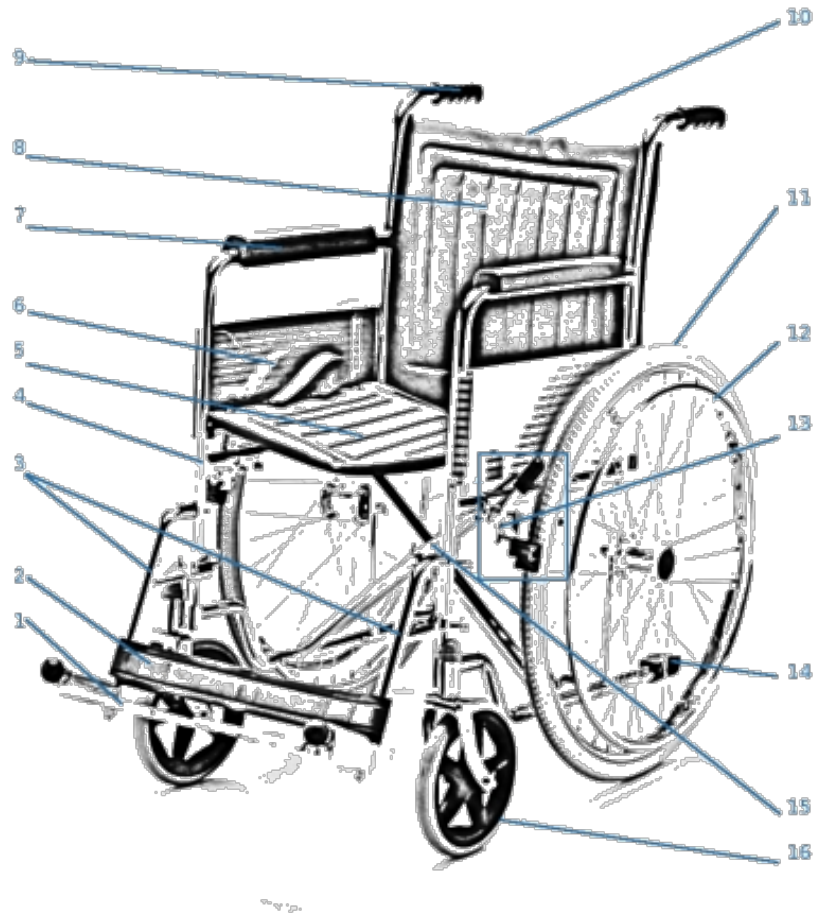
## *Wheelchairs – Evaluating for Safety and Comfort (cont.)*

- The cushion and seat of the wheelchair should be treated as a single unit so that the seat is neither too high nor too low when the cushion is added. The user's knees should be at a 90-degree angle when seated. A seat that is too high will be uncomfortable, reducing the efficiency of the wheelchair and making it harder to use. Conversely, a seat that is too low can cause uneven weight distribution.
- A cushion that is too deep can cause reduced circulation and contribute to poor posture, and will prevent weight of the user from being evenly distributed, resulting in less weight on the thighs.
- The height of the backrest is also very important. Placement that is too high can restrict movement of the shoulders and upper body. A backrest that is too low will not provide enough support and can result in poor posture.
- The overall width of the wheelchair is another important consideration. A wheelchair that is too wide can result in the user developing poor posture by causing the individual to lean from side to side to reach the wheels. A wheelchair that is too narrow can cause discomfort and sores. Finding the correct median is essential.

# Product Knowledge

## Wheelchairs – Construction

1. Footrest
2. Legrest
3. Front Rigging
4. Frame
5. Seat
6. Metal Skirt
7. Armrests
8. Backrest
9. Push Handles
10. Push Axle
11. Rear Wheels
12. Handrims
13. Brakes
14. Tipping Lever
15. Crossbars
16. Caster Wheels
17. Anti-Tip Casters  
(Not Pictured)



# Product Knowledge

---

## *Wheelchairs – Construction (cont.)*

- 1. Footrest** – The footrests, also called footplates and foot pedals, can be rotated and can be adjusted to accommodate different leg lengths.
- 2. Legrest** – The legrest extends from the front of the wheelchair. The footrest is attached to the leg rest.
- 3. Front Rigging** – The front rigging refers to the footrest arm and the legrest as a single unit. Front rigging on most conventional wheelchairs can be removed and can often be raised to provide an elevated leg rest. This is not always the case in less- expensive models.
- 4. Frame** – The conventional wheelchair frame is made out of cold rolled steel that is chrome plated. The frame is the heaviest part of the wheelchair, weighing up to 50 pounds. A stainless steel frame is available that weighs about 10 pounds less.
- 5. Seat** – The seat, like the other fabric parts of a conventional wheelchair, is made from vinyl and uses a sling design. Multiple colors are available and vinyl fabric makes it very easy to clean.

# Product Knowledge

---

## *Wheelchairs – Construction (cont.)*

6. **Metal Skirt** – the metal skirt is installed on either side of a conventional wheelchair between the armrests. It is designed to protect the users clothes from dirt, moisture, and debris that can be kicked up by the wheels. Metal skirts also prevent the users clothes from becoming caught in the wheelchair.
7. **Armrests** – there are two types of armrests—full length and desk type. The armrests are secured to the frame in two places and are designed to be very sturdy.
8. **Backrest** – the backrest height is fixed and typically is about 16 ½ inches high. However, a reclining backrest and extending backrest are available as options for most conventional wheelchairs.
9. **Push Handles** – the push handles are located on the back of the wheelchair and rubber handles are installed to make them more comfortable.
10. **Push Axle** – the push axle provides support for the push handles and is at a fixed height.
11. **Rear Wheels** – standard rear wheels are 24 inches in diameter. Both pneumatic and solid tires are used.

# Product Knowledge

---

## *Wheelchairs – Construction (cont.)*

- 12. Handrims** – the handrims extend outwards from the rear wheel. They are chrome plated and are used to propel the wheelchair.
- 13. Brakes** – the brakes are located on the front of the large rear wheels next to the bottom of the seat.
- 14. Tipping Lever** – the tipping lever extends from the bottom of the frame and is designed to make it easier to move the wheelchair over obstacles, such as curbs. The person pushing the wheelchair will put weight on the tipping lever, which causes the wheelchair to tip backwards.
- 15. Crossbars** – the crossbars are located under the seat and allow the wheelchair to be easily folded for storage and transportation. Typically there are no locks to keep the conventional wheelchair from folding, instead this is prevented by weight of the user.
- 16. Caster Wheels** – conventional wheelchair standard (caster) wheels are 8 inches in diameter. Caster wheels are generally made of solid rubber, but for outdoor use pneumatic tires are recommended.

# Product Knowledge

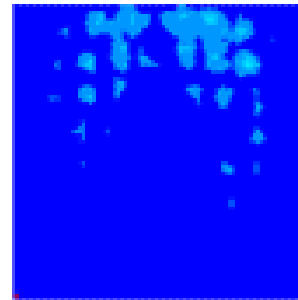
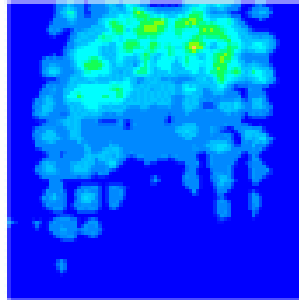
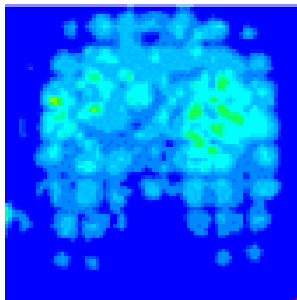
---

## *Wheelchairs – Construction (cont.)*

**17. Anti-Tip Casters (not pictured)** – anti-tip casters, designed to prevent the wheelchair from tipping over backward, are not always present on conventional wheelchairs. In the event that the wheelchair tips over too far, the anti-tip casters make contact with the ground, preventing it from tipping over completely.

# Product Knowledge

## *Wheelchairs – Pressure Relief with Tilt and Recline*



# Product Knowledge

## *Fully Reclining Wheelchair*

- Weight limit: 250lbs
- Release for reclining back is located on push handles
- Anti-tippers are standard on these chairs
- E1050 – fixed arms, ELRs (elevated leg rests)
- E1060 – detachable arms, ELRs
- E1070 – fixed arms, SDFR (short delay free recall)



# Product Knowledge

## *Semi-Reclining Wheelchair*

- Weight limit: 250lbs
- Release for moving back is located on push handles
- Anti-tippers are standard on these chairs
- E1100 – fixed arms, ELRs
- E1110 – detachable arms, ELRs



# Product Knowledge

## *Hemi Wheelchair*

- Weight limit: 250lbs
- These chairs offer a lower ground clearance for shorter patients, paraplegics or patients using their feet to ambulate
- E1083 – fixed arms, ELRs
- E1084 – detachable arms, ELRs
- E1085 – fixed arms, SDFR
- E1086 – detachable arms, SDFR



# Product Knowledge

## *Standard Wheelchair*

- Weight limit: 250lbs
- Weight of chair is approximately 35 – 40 lbs
- E1130 – fixed arms, SDFR
- E1140 – detachable arms, SDFR
- E1150 – detachable arms, ELRs
- E1160 – fixed arms, ELRs



# Product Knowledge

## *Amputee Wheelchair*

- Weight limit: 250lbs
- Must specify on which side of the body the amputation occurred
- E1170 – fixed arms, SDFR
- E1180 – detachable arms, SDFR
- E1190 – detachable arms, ELRs
- E1195 – heavy duty, fixed arms, ELRs



# Product Knowledge

## *Lightweight Wheelchair*

- Weight limit: 250lbs
- Weight of chair is approximately 25 – 34 lbs
- E1250 – Fixed Arms, SDFR
- E1260 – Detachable Arms, SDFR
- E1240 – Detachable Arms, ELRs
- E1270 – Fixed Arms, ELRs



# Product Knowledge

## *Heavy-Duty Wheelchair*

- Weight limit: 350lbs (varies by manufacturer)
- E1285– fixed arms, SDFR
- E1290 – detachable arms, SDFR
- E1280 – detachable arms, ELRs
- E1295 – fixed arms, ELRs



# Product Knowledge

## *Power Wheelchair*

- Weight limit: varies by model
- An evaluation is necessary on the purchase of a power wheelchair
- Pricing on these items can range from \$3,000 to \$48,000/+
- Models differ by many things including the type of motor: front-wheel, mid-wheel, rear-wheel drive

*aka Electric Wheelchair*



# Product Knowledge

## Cushions

- Distribute forces and pressure evenly across the buttocks to reduce the risk of pressure ulcers
- Composition:
  - Gel
  - Foam
  - Air combo
  - Fluid
- Provides:
  - Skin protection
  - Support
  - Comfort
- HCPCS: E2601-2621



# Product Knowledge

## Wheelchair Accessories – E0950, E1030

- Make/model and seat size may be necessary for some accessories

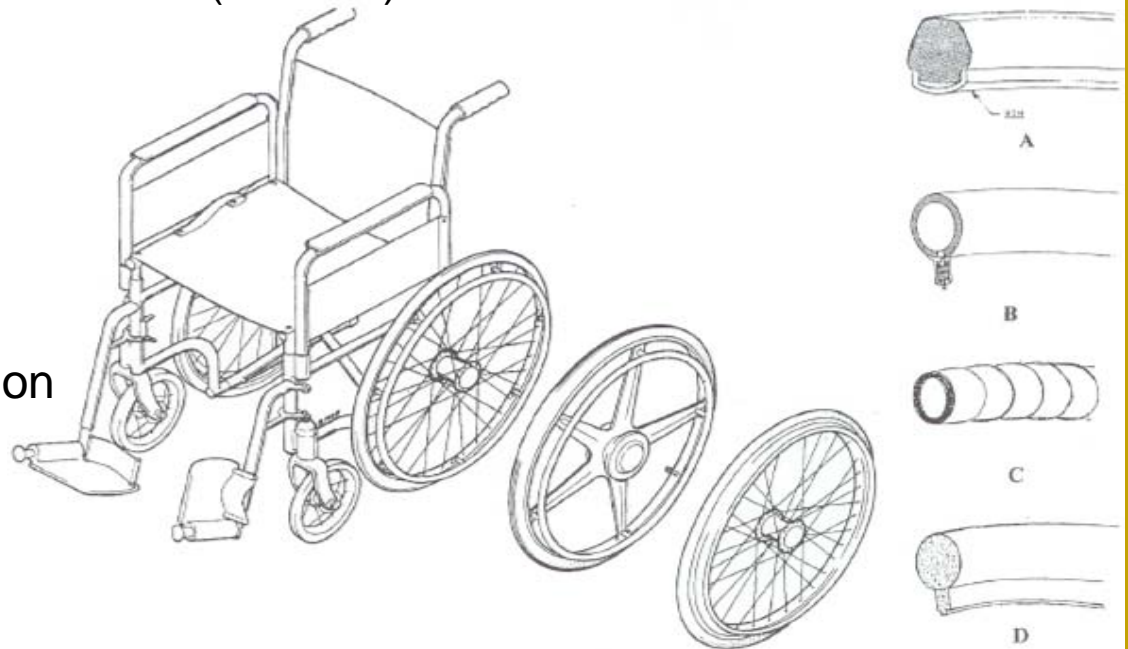


# Product Knowledge

## Tires and Tubes – E0214, E2225

- A. Solid rubber tire
- B. Pneumatic (air-filled) inner tube
- C. Semi-pneumatic-coil reinforced (flat free) inner tube
- D. Solid foam inner tube

Solid rubber tires are used on indoor or smooth surfaces. Pneumatic and semi-pneumatic are used on rough surfaces and outdoors, and provide shock absorbance



# Product Knowledge

## Wheelchair Gloves – E1399\*

- Available in several styles and different sizes, generally ranging from small to medium to large and x-large
- Styles
  - Full finger
  - No finger
  - Half finger
- \* *Verify with vendor if a more appropriate HCPCS is available*



# Product Knowledge

## *Scooters – Power Operated Vehicle K0800, K0812*

- Weight limit: varies by model
- Available in several models with the most common difference being the choice between three or four wheels
- May require a lift for transport



# Product Knowledge

---



**Hoveround**



**Three Wheel Travel**



**Three Wheel**



**Four Wheel**



**Heavy Duty**

# Product Knowledge

## *Sling or Seat for Patient Lift – E0621*

- Used in conjunction with patient lift
- Several styles are available such as:
  - cotton
  - nylon mesh
  - commode opening
  - head supports



# Product Knowledge

## *Patient Lift – E0630, E0635*

- Used in conjunction with patient sling
- Requires set-up in the patient's home
- Two different models available:
  - Hydraulic (E0630)
  - Electric (E0635)

*aka Hoyer Lift*



# Product Knowledge

## *Transfer Boards – E0705*

- Assists in safely moving an injured worker from one location to another with or without assistance

